

Note: Bedrock layer does not cover entire area.

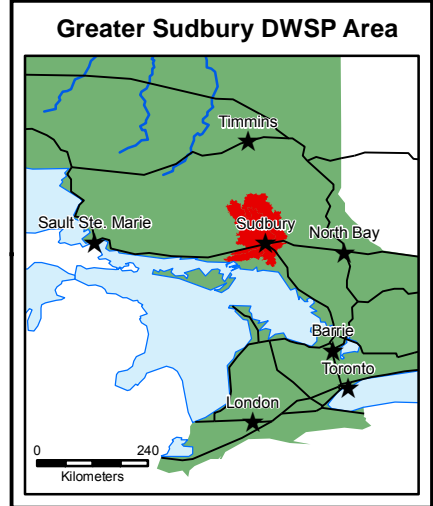
| Legend | |
|----------------|---------------------------------|
| | Community |
| | City of Greater Sudbury |
| | DWSP Area |
| | Fault Lines |
| Bedrock | |
| | Wanapitei complex |
| | Gneiss, schist, intrusive rocks |
| | Olivine diabase dykes |
| | Chief Lake Batholith |
| | Granophyre |
| | Quartz norite |
| | Norite |
| | Sublayer |
| | Chelmsford Fm. |
| | Onwatin Fm. |
| | Roads |
| | Railway |
| | Rivers |
| | Lakes |
| | Wetlands |
| | Onaping Fm. |
| | Nipissing gabbro |
| | Felsic intrusive rocks |
| | Cobalt Gp. |
| | Quirke Lake Gp. |
| | Hough Lake Gp. |
| | Elliot Lake Gp. |
| | Mafic intrusive rocks |
| | Gneiss, granite, migmatites |
| | Metavolcanic rocks |

This map has been prepared to meet provincial requirements under the Clean Water Act, 2006 and should not be used for other purposes without consultation with the responsible conservation authority and should not be relied on as a precise indicator of routes or locations, nor as a guide to navigation.

This publication was produced by:
Nickel District Conservation Authority
200 Brady Street
Sudbury, ON, P3E 5K3

Data Acknowledgement:
Members of the Ontario Geospatial Data Exchange
City of Greater Sudbury
WESA Inc.
Golder Associates Ltd.

© Queen's Printer for Ontario [2013]
Map Projection & Datum: UTM NAD83 Zone 17N



Made possible by the Government of Ontario.